

# Weekly News Term 4 Week 8





Gillieston  
Canteen

# CHRISTMAS CELEBRATION



Lollies  
10c – \$1.00



Icecream cup with  
sprinkles & candy cane  
\$2.00



Ice cream cone  
christmas tree  
cupcakes  
\$2.00



Reindeer  
Brownie  
\$1.50



Choc Balls  
50c

**13** DEC | OVER THE COUNTER  
2024 | AT LUNCH & RECESS

Our lunch order menu, ice blocks & drinks  
will also be available to purchase on the day!



*Gillieston Public School*

# **PRESENTATION DAY**

**Thursday 12 December 2024**

**9:15am Year 3 - 6**

**12pm Year K- 2**

*All award recipients have received  
invitations.*



# Home Reading Awards Term 4

**Congratulations** to these students who have bought their Reading Log Book into Mrs Hunt. To acknowledge your achievement, Reading Awards and Gillo's have been given out during library lessons. Remember to add your reading to your log each night, either home reading books or library books.

It ALL counts to becoming a better reader.



**Come into the Library of a morning to update any home readers.**

## 25 Nights

Grace M  
Indianna C  
Charlotte D  
Riley B  
Saphira  
Tyler

## 50 Nights

Flynn S  
Brae  
Summah  
Riley B  
Elliot H  
Blake K  
Hayden D  
Tyler  
Alexandra  
Riley B

## 75 Nights

Noah W  
Sia U  
Summah  
Patrick H  
Alice  
Alexandra  
Tilly

## 100 Nights

Nixon  
Arish  
Grace W

## 125 Nights

Emily B  
Riley M  
Quinn  
Grace W  
Billie M  
Lucy G  
Luciana  
Mateo  
Arish

## 150 Nights

Allaya  
Phoenix M  
Riley M

## 175 Nights

Camden  
Alexa  
Muhammad  
Kayden  
Phoenix M  
Ava  
Bethany  
Allaya

## 200 Nights

Lucas  
Ava  
Bethany  
Camden  
Allaya  
Kaiden

## 225 Nights

Lucas

## 250 Nights

Lucas  
Alexa



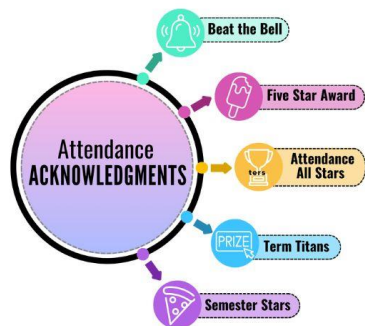
Aboriginal students wishing to participate in the Welcome Brolga Dance for our school's carols on Friday 13th, students can choose to wear black clothing for the opening performance and change into Christmas clothing afterwards however this is not necessary. Students wishing to have ochre painted- please come to the library immediatley at your arrival as this dance will be on at 5:30.



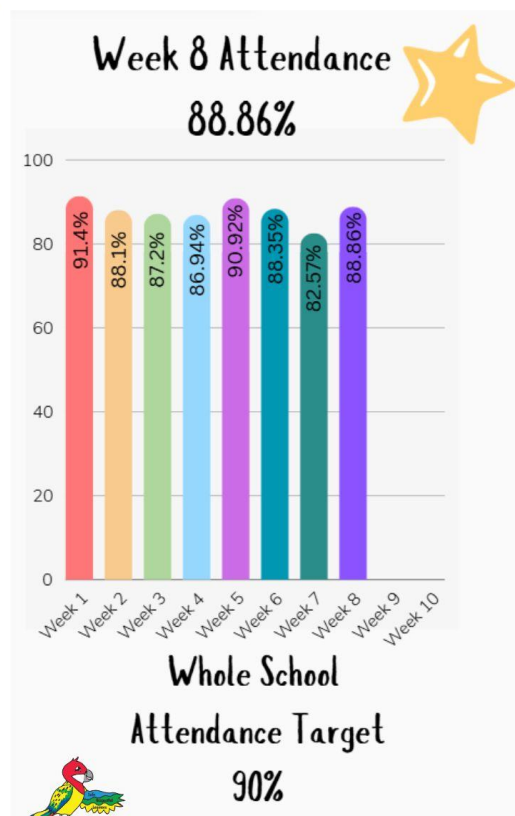
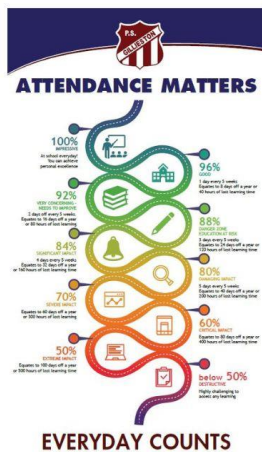
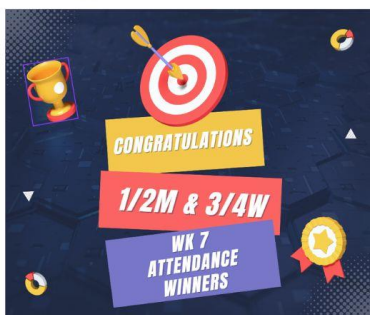




## Attendance Matters



The race is on!!



Safe Respectful Learners

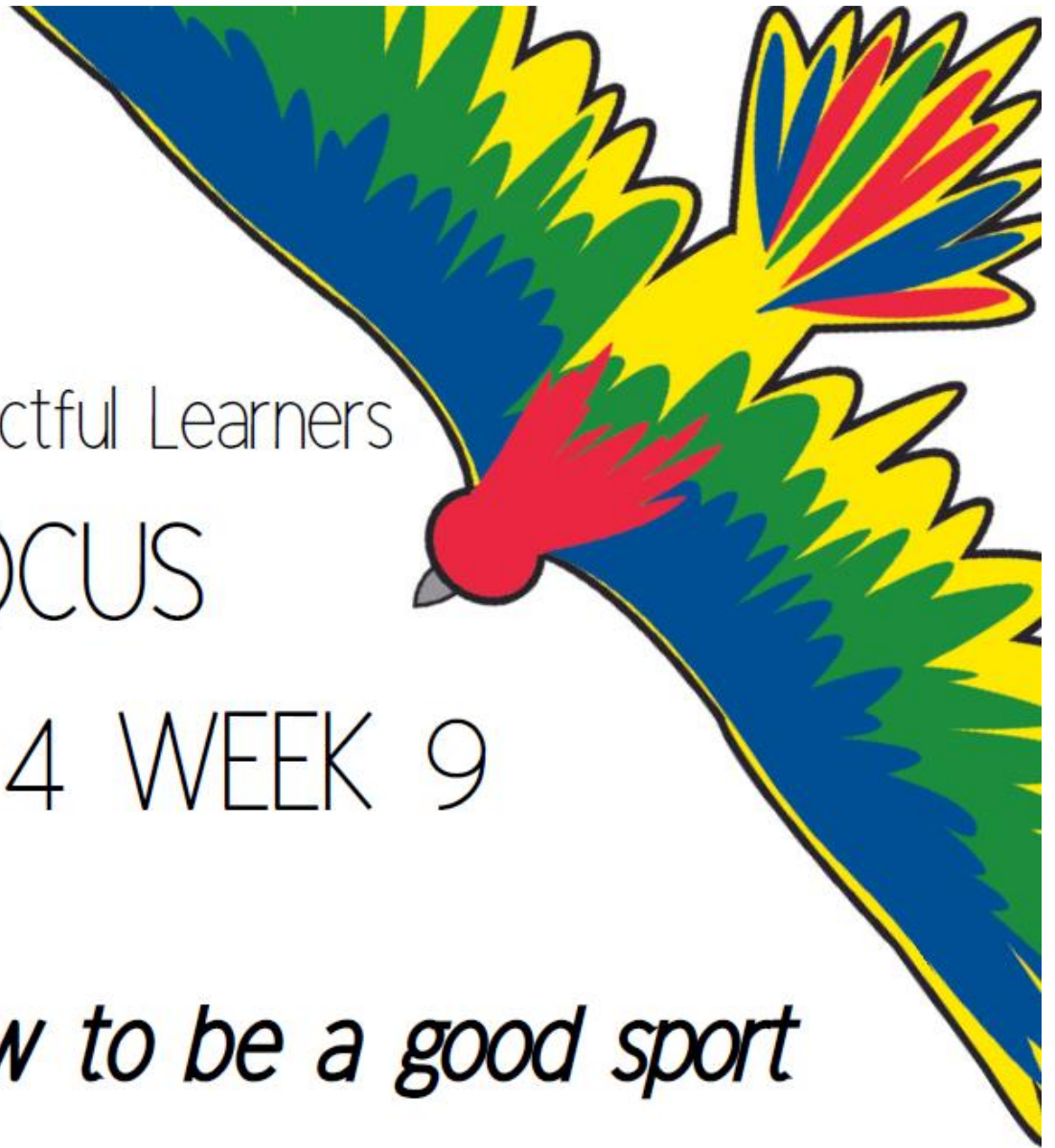
PBL FOCUS

TERM 4 WEEK 9

*How to be a good sport*

*Can you think of a time you showed good  
sportsmanship?*

*How did this make you feel?*





# WELLBEING NEWS

## Brave Online Program

**BRAVE**

[home](#)

[program](#)

[faq](#)

[resources](#)

[covid-19](#)

[contact](#)

[get started](#)

[login](#)

BRAVE PROGRAM

### Online help for worried kids

[about BRAVE](#)



**Turn your troubles into triumphs,  
your worries into well-being, and  
your fears into victory with the  
BRAVE® Program.**

[learn more](#)

BRAVE is a fun, easy to use, evidence-based program designed for children and teens who want to learn how to reduce stress and anxiety, and improve their mood—and there's help for parents too.

The BRAVE Program will help you (and your parent or carer) identify, understand, and change your worried thoughts and behaviour patterns, so you can improve the way you feel.

**BRAVE**

[HTTPS://WWW.  
BRAVE-ONLINE  
.COM/](https://www.brave-online.com/)

### Evidence-based with proven results

Results show most young people will achieve significant relief from their anxiety symptoms with BRAVE after just 3 sessions. Since 2014, over 50,000 young Australians registered for the BRAVE self-help program. Our peer reviewed studies show that 70% of clinically anxious young people who start BRAVE are free of their diagnosis when they complete the program.

[The science](#)



**Young child**

for kids 3-7 years



**Child**

for young people 8-12 years



**Teen**

for young people 12-17



# GILLIESTON PUBLIC SCHOOL

# WK 9 TERM 4

## *Week Ahead*

**MONDAY**  
09/12

**TUESDAY**  
10/12

**Year 6 Farewell** - begins at 5:30pm

**WEDNESDAY**  
11/12

**THURSDAY**  
12/12

**Presentation Day:** in the Oosh hub

Years 3-6: 9:15am

Years K-2: 12:00pm

**FRIDAY**  
13/12

**Christmas Carols** - begins at 5pm

**IMPORTANT  
INFORMATION**

**Christmas Carols:** Please bring a picnic rug or chair to sit on. A variety of food trucks will be available during the event.

Please refer to the sentral parent portal calendar, news feed, newsletter and digital permission notes for further dates & information regarding upcoming events.







NSW Department of Education

# Applying for my child to attend an opportunity class or selective high school

## Why selective education?

Grouping high potential and gifted students together and using special teaching methods supports their:

- academic development
- emotional wellbeing
- friendships and social life.

Students tell us that they enjoy learning more when their classmates have similar abilities and interests.

## Is it right for my child?

Here are some signs that your child may benefit from selective education.



learns quickly and easily



goal-driven



asks complex questions



good memory



curious and creative



deeply explores passions

Keep in mind, some children's high potential may be hidden. Being in an opportunity class or selective high school could help.

## How can I support my child through the application process?



Talk to your child about the **benefits** and **challenges** of selective education and address their questions and concerns.



Ask your **child's teacher** (or other staff who know them well) whether they think selective education will suit your child.



Apply for any required **reasonable adjustments** for disability or medical conditions.



Encourage your child to use the department's **free resources** to prepare for the test.



Remind your child they only need to do a **small amount** of **preparation** for the placement test, and **don't** need coaching.



Support your child to continue **co-curricular activities**, see friends, eat healthily and sleep well in the lead-up to the test.

The **Equity Placement Model** reserves up to 20% of places in opportunity classes and selective high schools for high potential and gifted:

- students from low socio-educational advantage backgrounds
- Aboriginal and/or Torres Strait Islander students
- students from rural and remote locations
- students with disability

Learn more: [edu.nsw.link/equity](https://edu.nsw.link/equity)

Resources in other languages:  
[edu.nsw.link/shsoc\\_languages](https://edu.nsw.link/shsoc_languages)



### Financial support

[edu.nsw.link/pubedu](https://edu.nsw.link/pubedu)

The [Public Education Foundation scholarships](#) offer financial support to help young people at NSW public schools to access opportunities and reach their potential.

*Please note there are no fees to apply and sit for the placement test, and there are no extra fees to enrol in a selective high school or opportunity class.*

### Get ready to apply

Learn more at our [website](#):



### Telephone interpreter service

If you need interpreter assistance to speak with your child's class teacher please call the Telephone Interpreter Service on 131 450 and ask for an interpreter in your language. Tell the operator the phone number you want to call and the operator will get an interpreter on the line to assist you with the conversation. You will not be charged for this service.

[education.nsw.gov.au/shs-oc](https://education.nsw.gov.au/shs-oc)



# A guide to selective high schools and opportunity classes

Selective high schools and opportunity classes are specialist school settings that group together **high potential and gifted students**.

Learning with classmates who have similar abilities helps students' academic development and wellbeing.

Students still follow the NSW curriculum, but teachers may use special teaching strategies for high potential and gifted learners.

## Selective high schools

There are 4 types of selective high schools:

- **fully selective high schools** – these are schools where all students have been selected based on the placement test
- **partially selective high schools** – these are schools that have a mix of selected students and local area students
- **agricultural selective high schools** – these are schools that emphasise the study of agriculture and all students are selected on their academic ability. Some of these schools also provide boarding where students live at the school
- **Aurora College** – these are online selective classes. They are provided at local public high schools in rural and remote areas.

## Opportunity classes

Opportunity classes are for high potential and gifted students in Years 5 and 6. They are offered in a number of public primary schools across NSW.

Aurora College provides online opportunity classes for rural and remote students in their local primary schools.

## Where are they located?

Selective high schools and opportunity classes are available across metropolitan, regional and rural NSW. Check the maps below for a school near you.

- [Find an opportunity class](#)
- [Find a selective high school](#)

## How do I know if it is the right fit for my child?

Does your child:

- enjoy learning
- have intense curiosity
- display a good memory
- ask complex questions
- require fewer repetitions when learning new things
- display creative ways of thinking
- become intensely focused in their area of interest or passion?

If some of these sound like your child, an opportunity class or selective high school might be a good fit.

## How do I apply?

Parents apply during the application period online at: [shsoc.education.nsw.gov.au](https://shsoc.education.nsw.gov.au)

### 2026 entry into an opportunity class or selective high school

The application period for 2026 entry is from **7 November 2024** to **21 February 2025**.

What year is my child in when I apply?

#### Opportunity classes

Parents apply when their child is near the end of Year 3 in 2024 or at the beginning of Year 4 in 2025.

#### Selective high schools

Parents apply when their child is near the end of Year 5 in 2024 or at the beginning of Year 6 in 2025.

Learn more on our website about the [application process](#) and residency requirements at [who can apply for opportunity classes](#) and [who can apply for selective high schools](#).

## The placement test

After you apply, your child must sit a test. Students are then selected for placement based on their test performance.

### When is the test?

The test will be available across a 3-day period from **Friday 2 May** to **Sunday 4 May 2025**.

Students attend one test day only and do **not** need to bring their own computer to sit the placement tests.



## What's in the test?

The test assesses how well students understand what they read, reason using mathematics and their thinking skills. Applicants for selective high schools are also tested on their writing skills.

Learn more at: [Placement test](#).

## When will I find out about my child's results?

After your child sits the test, you will get an email in Term 3 with their test performance and next steps. If your child is offered a place, you will get information on how to enrol.

## The Equity Placement Model

The [Equity Placement Model](#) helps all students to have fair access to selective high schools and opportunity classes.

Under the Model, up to 20% of student places at each selective high school and opportunity class are held for high potential and gifted students:

- from low socio-educational advantage areas
- of Aboriginal and/or Torres Strait Islander background
- from rural and remote locations
- with disability.

The held places are offered to students based on their performance in the placement test.

Learn more at [Fair Access](#).

### Supporting gifted students in all NSW public schools

Selective high schools and opportunity classes are just one of the ways that the NSW Department of Education supports high potential and gifted students.

High potential and gifted students are supported in all NSW public schools to reach their full potential. Learn more about the department's [High Potential and Gifted Education Policy](#).

## Need more information?

Check the following webpages for more detailed information.

### Webpages for parents and carers

- **Selective high schools and opportunity classes:** [education.nsw.gov.au/shs-oc](https://education.nsw.gov.au/shs-oc)
- **Selective high schools:** [education.nsw.gov.au/shs-yr7](https://education.nsw.gov.au/shs-yr7)
- **Opportunity classes:** [education.nsw.gov.au/oc](https://education.nsw.gov.au/oc)

### Webpages for students

- **Selective high schools and opportunity classes information for students:** [edu.nsw.link/shs-oc-students](https://edu.nsw.link/shs-oc-students)
- **Applying for an opportunity class:** Student resource hub: [edu.nsw.link/OChub](https://edu.nsw.link/OChub)
- **Applying for a selective high school:** Student resource hub: [edu.nsw.link/SHShub](https://edu.nsw.link/SHShub)

### Social media

Join our official department Facebook groups:

- **Selective high school placement:** [edu.nsw.link/shs-fb](https://edu.nsw.link/shs-fb)
- **Opportunity classes:** [edu.nsw.link/oc-fb](https://edu.nsw.link/oc-fb)

### Contact us

Contact the Selective Education Unit at:

**Email:** [ssu@det.nsw.edu.au](mailto:ssu@det.nsw.edu.au)

**Phone:** 1300 880 367

**Telephone interpreter service: 131 450**

If you need an interpreter to assist with your enquiry please call the telephone interpreter service and tell the operator:

- the language you need
- the phone number you want to call.

The operator will call the Selective Education Unit phone number (1300 880 367) and get an interpreter on the line to assist you with your conversation. You will not be charged for this service.